

# ENVIRONMENTAL NEWSLETTER

VOLUME 7, ISSUE 5

NOVEMBER 2009

## Pre-Winter Village Clean Up

The October 29, 2009 Port Graham Pre-Winter Village Clean Up was a success. Thank you to our staff, parents, other volunteers and to the students who participated. We began our work after 10:00 a.m. and split into two groups and finished the whole village before noon.

Thank you to Tom Yeaton who grilled hamburgers and hot dogs for our lunch. Thank you to the Variety and General Store for their donations of drinks. Your support for our community is greatly appreciated.

The weather was perfect for being outdoors. Although it was very windy (too windy for the airplanes to land) the sun was out so we didn't get too cold.

This pre-winter clean up is becoming an annual event, and in conjunction with the annual village clean up, helps to keep the village looking its best and gets the community and members working together. Great work, everyone. Also thank you to the individuals who voluntarily pick up trash in the village on their own time year-round.



### ENVIRONMENTAL HEALTH COMMITTEE

- Peter Anahonak, Sr./Elder Rep
- Jennie Kamluck/Member
- Lydia McMullen/Member
- Stella Meganack/Member
- John Moonin/Member
- Port Graham High School Students

### IN THIS ISSUE

### PAGE

Pre-Winter Village Clean Up Pictures	2
From the....Environmental Planner	3
Crocheting Plastic Grocery Bags....	4
Reduce, Reuse, Recycle	5

# Pre-Winter Village Clean Up— continued



After the clean up we sorted the 24 trash bags and got 2 bags of aluminum cans, 2 bags of plastic bottles and 2 bags of burnable trash. So we recycled or reduced the waste by 25% before putting it in the land fill.

So please continue to sort your trash, every little bit helps in the long run.

**LET'S KEEP OUR  
COMMUNITY  
BEAUTIFUL!**





## FROM THE DESK OF THE ENVIRONMENTAL PLANNER

Hello Paluwik,

I wanted to give everyone a brief report about where we are at with the Environmental Program. As you all know, the Port Graham Village Council has been receiving funds from the federal agency, Environmental Protection Agency (EPA) to implement the Indian General Assistance Program (IGAP) Environmental Program, which is a four-year program. We are into our second year with this program, and hope to apply for another 2 years to continue our capacity building with EPA. I will be preparing a 2 year grant for the Environmental Program and plan to meet with the local Environmental Health Committee members, the Village Council members, our EPA grant specialist and, Katherine Brown to discuss ideas for the new grant. It's important to get as much input from the community, so we can continue to address the needs of the community. Our next Environmental Health Committee (EHC) meets November 13th at 10:00am at the community center, everyone is welcome to please attend.

We have been very busy this past fall, as everyone else has been. October is generally the "meeting season" after our summer subsistence harvest. Walter and I traveled to Idaho to attend the Tribal Leaders Summit sponsored by EPA. This meeting was very well attended by Alaska Tribes to bring their issues and concerns to the Environmental Directors Office of Air, Water & Land. The big concern from Alaska Tribes is continued funding for capacity building regarding our Environmental issues, such as Global Climate Change. Many Alaskan Villages are experiencing the impacts of Global Climate, such as erosion and warming temperatures.

The Tribal Administrator and I will be attending the fall IGAP training in Anchorage. Many of the reporting requirements are changing and we need to be aware of the changes coming down to the Tribes. One major change is all the grants submitted will be electronically. This requires consistent and reliable internet, which consistently is a challenge for many villages.

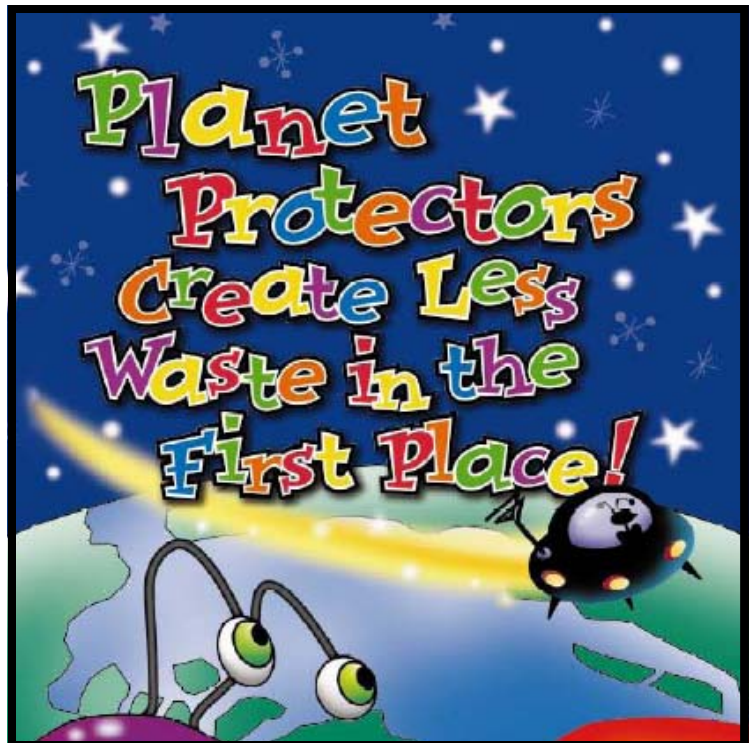
The Port Graham Environmental Program held our annual fall clean-up. We would like to thank everyone to helping with the clean-up. Thanks to you all, we all can take pride in our community!! There is a lot more that we will be working on, so please come to the EHC meeting next Thursday to find out in more detail what's going on and what's up and coming. Quyanal!

Violet Yeaton/Env Planner

## Planet Protectors Club for Kids

Be a Planet Protector! As a Planet Protector, your mission is to improve the world around you by making less trash. Planet Protectors also help other people learn to reduce, reuse, and recycle. To carry out this mission, check out the fun activities and games at the below website. The more you learn about reducing wastes and saving resources, the better you become at carrying out the Planet Protector goals. You will need Adobe Reader to view some of the files on this site.

<http://www.epa.gov/epawaste/education/kids/planetprotectors/>



## CROCHETING PLASTIC GROCERY BAGS INTO TOTE BAGS

### Starting off:

To create the plastic "yarn": one method is to cut around and around the bag making one continuous strip out of each bag, in the desired width, usually 1-2 inches. My method is to

1. First fold the bag lengthwise to form a narrow roll.
2. Cut the bottom edge off then, working your way up the bag, cut into 1-2 inch wide segments.
3. These will be loops when unfolded.
4. Lastly, loop the loops together to form a continuous chain, and wind into a ball. When your ball is as large as a volleyball, you are ready to begin crocheting. The knots are not noticeable in the finished product.

### What size crochet hook to use:

I use a hook in the size range of F to I. The smaller hook will create a tighter, solid stitch and the tote will take a little longer to make. The larger hook makes a looser stitch and the bag works up faster.

### To start your tote bag:

Make a chain of stitches as long as you want the bottom of your bag to be, at least 25 stitches long. Double back on your chain and make single crochet (sc) at each stitch, putting 3 stitches in the same holes at the end of the chain as you turn to come back along the opposite side of the chain. Continue this until about the third row when you begin forming a rectangle bottom for your tote by putting three stitches in each hole at the four corners. Do this until the bottom of the tote is as large as desired.

### How to make the sides of the tote:

When the bottom is as large as required, simply stop adding the three extra stitches in the corners; this sc in each will make the tote sides. Keep crocheting until you have it as high as you like it. I find that if I want a definite bottom with a sharp turn defining the sides, I get this by increasing 4-6 stitches in the row after completing the bottom rectangle. (To

decrease: draw up loops through 2 stitches that follow each other, with three loops on the hook, draw yarn through the 3 loops at once.)

### The handle:

After your tote is as deep as you like, turn the bag inside out. You will find that the stitches on the inside are more even and look better. Choose two points that you want the handle to connect on the tote. Make sure that these are directly across from each other. Opinions and styles differ at this point. I've tried a few different ways. One way is to chain 55-60 across to the other side and attach it. Now go back and forth lengthwise across the handle until you have the desired width. Make sure to attach it firmly on each side on each row. Another way is to sc 4-5 stitches, turn, chain one sc back across again. Continue in this manner until your handle is the length you want. Attach it firmly to the other side. Hair clips can also be made with plastic bags!

*These instructions by Amelie Redman, Bethel, AK from Solid Solutions. (To get a copy of Solid Solutions contact the EPA Tribal Program, 271-6323)*





# REDUCE, REUSE, RECYCLE

The Environmental Program has begun working on clearing and organizing the recycling area and the hazardous waste area. Please continue to deposit materials in the proper areas. Thanks to those who continue to sort their trash and recycle plastic bottles and aluminum cans.



The burn box is for paper, cardboard, wood products only, Remember -NO STYRO-FOAM.



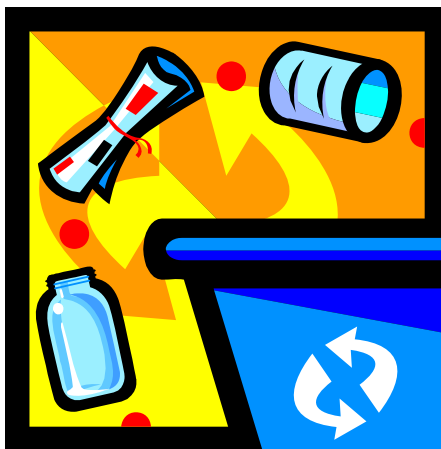
All other waste should go in the landfill at the marked area.



Remember to put your aluminum cans and plastic bottles in the proper recycling container.



The Designated area for used batteries is located next to the Hazmat building. There are two totes placed here, one is for household batteries and the other is for auto and boat batteries.



Please dispose of your electronic waste in the area marked under the conex. Also remember other large waste, like fridges, stoves, etc. belong at the Inert Waste area.



The designated area for oil is located between the two trailers. Totes are conveniently placed in this area for storage of used oil. Please dispose of fuel/oil in the buckets located in this area. Do not dump oil into the large holding tank.

**PORT GRAHAM ENVIRONMENTAL PROGRAM**

Port Graham Village Council

P.O. Box 5510

Port Graham, Alaska 99603

Local Box Holder

P.O. Box 55\_\_

Port Graham, AK 99603

We're on the web!!!

[www.portgraham.net](http://www.portgraham.net)

Funding for this publication was made possible by the U.S. Environmental Protection Agency's (EPA) Indian General Assistance Program (IGAP)



**PORT GRAHAM VILLAGE COUNCIL MEMBERS:**

**Patrick Norman**-First Chief

**Martin Norman**-Second Chief

**Deborah McMullen**-Treasurer

**Agnes Miller**-Secretary

**Stella Meganack**-Member

**Walter Meganack, Jr.**-Member

**Melvin Malchoff**-Member